



# CHARGING KIT SPECIFICATION FOR ACCUMULATORS

## ACCUMULATOR용 충전기

### CHARGING KIT FOR BLADDER ACCUMULATOR

#### Construction

Standard version includes :

- Valve body complete with ring nut connection to accumulator gas valve, pressure gauge, bleed and non return gas adaptor.
- 2.5m charging hose for high pressure series complete with bottle connections, or pressure reducer connection.
- Case

On request :

- Special adaptor for special accumulators gas valves.
- Charging hose with length of 6m

#### 구 조

표준품 포함 내역 :

- 가스충진기: accumulator연결용 ring nut connection 압력계, bleed valve, non return gas adaptor
- 호스 : 2.5m
- 케이스

옵션사양 내역 :

- 타사 호환용 accumulator gas valve용 special adaptor (Hydac, Olaer, EPE, Tobul 등)
- 6m 충전 호스



#### Technical data

Max working pressure	600bar
Accumulator connection	5/8" UNF – Standard 1/4" ISO 228 – Special adaptor on request
Pressure gauge	Φ63 connection 1/4" ISO 228 Full scale 400 bar for high pressure accumulators Full scale 25ar for low pressure accumulators
Weight	2.5kg (Case included)

#### Ordering Code

**CK – 400 – S – □**

1      2      3      4

1	Type	CK
2	Pressure gauge	5 ~ 400 kg/cm <sup>2</sup> (other spec' on request)
3	Connection to accumulator	S : 5/8" UNF(Standard) C : Special adaptor for other accumulators
4	Charging hose	- : 2.5m (Standard) L : 6m (Option)

## CHARGING KIT SPECIFICATION FOR ACCUMULATORS ACCUMULATOR용 충전기

### CHARGING AND TEST KIT(PN220/350) FOR PISTON ACCUMULATOR

#### CONSTRUCTION

Part 1. : Accumulator connector width across flats : 30, appr.215mm long, width hose connection and screw thread G 3/4.

Part 2. : With cylinder connection W24, 32 x 1 1/4" DIN 477  
Pressure gauge Φ63, quality class 1.6,  
Pressure discharge valve, Hose connection,  
Connection for gas safety valve.

Part3. : Hose DN6, 1500mm long  
(Special length on request)

#### 구 조

Part 1. : 2.15mm 호수 연결용 G3/4" 나사,  
Accumulator connector(SW30)

Part 2. : 실린더 연결부 (32 x 1 1/4" DIN 477)  
Φ63 압력계(품질등급 1.6)  
압력 방출 밸브, 호수연결부, gas safety valve 연결부

Part 3. : 호스 DN6, 1500mm  
(특별한 사양에 대해 별도 청구)

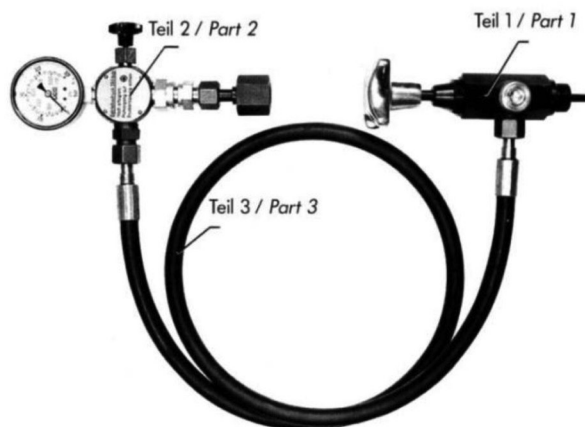
#### Description

The adapter contains the gas filling and testing connector. It is connected to the piping between the FLUEN piston accumulator and the gas cylinder. There may be connected filling and testing kit.

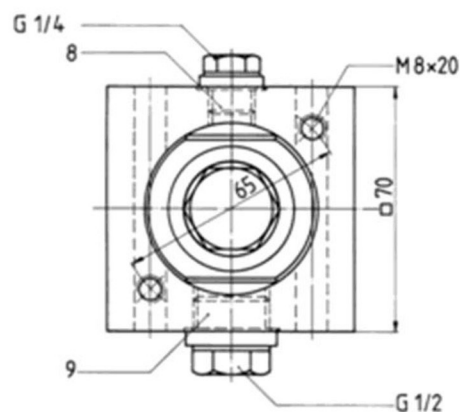
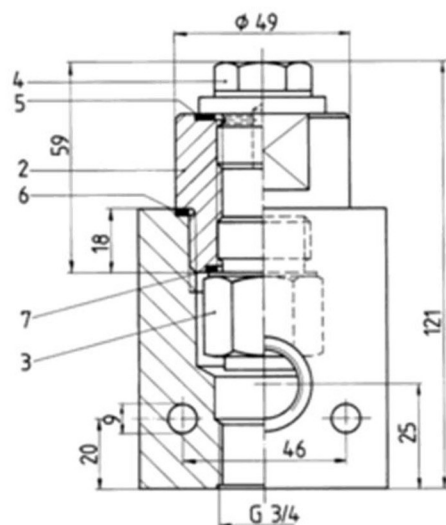
#### 설명

Adapter는 gas 충전 및 testing 연결을 포함한다. 이 제품은 가스실린더와 FLUEN piston accumulator사이를 배관은 연결한다. Filling / testing kit와 연결 될 것이다.

Pos.	Description – 설 명
1	Adapter complete
2	Screw-in part with RV
3	Gas non-return valve
4	Screw plug
5	U – seal ring
6	U – seal ring
7	Seal ring
8	Screw plug
9	Screw plug



CHARGING AND TEST KIT(PN220/350)



Adapter for piston accumulator